



CARE COORDINATION: REACHING OUT

26 Community Dental Care Coordinators (CDCCs) from 14 local community partners in Alameda County connect children and youth to dentists through outreach and in-reach efforts throughout the year. Meeting families where they are is the first step for our CDCCs.

CDCCs provide resources to families at health fairs and other events throughout Alameda County.
(Photo: Chris & Becky of Tiburcio Vasquez Health Center, June 2019)



CDCCs provide free dental hygiene supplies, dental health education, and support with making dental appointments to families.
(Photo: Lili & Nandita of Alameda County Office of Dental Health, August 2018)

Stomper of the Oakland Athletics visited Lili's table to check out our resources for having healthy teeth!
(Photo: Stomper, June 2019)



Healthy Teeth Healthy Communities (HTHC) is a program of the Office of Dental Health (ODH). HTHC is a cross-sector collaborative initiative to implement a county-wide dental health care coordination system to ensure Medi-Cal eligible children receive prevention and continuity of care services necessary to promote and maintain their dental health. The project period is April 2017 to December 2020.

HTHC Community Dental Care Coordinators (CDCCs)



... speak multiple languages:

Spanish	Mandarin
Bengali	Portuguese
Cantonese	Taiwanese
Farsi	Vietnamese
Korean	

... go to various places and events across Alameda County:

Alameda County Women, Infants, and Children (WIC) Offices

Eastmont, Fremont, Hayward, & Telegraph

Community Health Outreach Movement (CHOM) Events

Across Alameda County except in the City of Berkeley

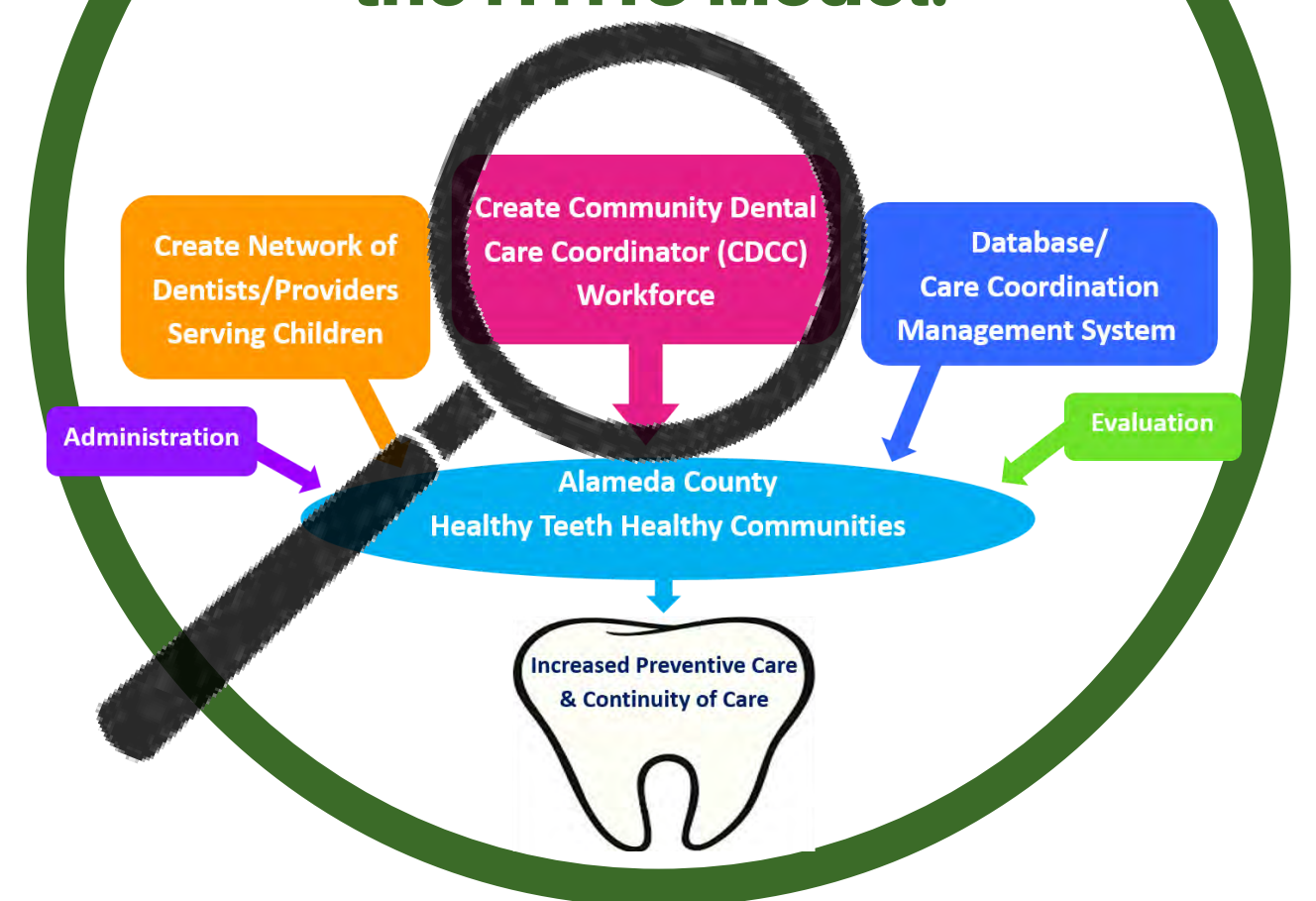
Festivals and Health Fairs



... are located at 14 partner agencies:

- Alameda County Office of Dental Health
- Alameda Health Systems
- Asian Health Services
- Axis Community Health
- Bay Area Community Health
- Center for Healthy Schools and Communities
- East Bay Agency for Children
- First 5 Alameda County
- La Clínica de La Raza
- Lifelong Medical Care
- Native American Health Center
- Roots Community Health Center
- Tiburcio Vasquez Health Center
- West Oakland Health

... and are a vital part of the HTHC Model!



Revised on 02/02/2021

If you are interested in more information and/or partnering with ODH, please contact us:



Office of Dental Health, Alameda County Public Health Department

1100 San Leandro Blvd
San Leandro, CA 94577

Tel: 510-208-5910
DentalHealth@acgov.org

Fax: 510-273-3748
<https://dental.acphd.org>

